

# Two piece Ball Valve

Technical Guide W4.14

## Two piece 316 Stainless Steel Ball Valve



11.22 | W4.14 BALL VALVE FULL BORE BSP 2 PIECE

### Applications

Chemical service

Water treatment

Waste water treatment

### Product Attributes

All 316SS or CF8M

Full bore

Blow out proof stem

### Quality

ISO 9001:2008 Quality

Management Standard

*We are the supply partner of choice for New Zealand's civil construction industry, specialising in water and infrastructure based solutions.*

**HYND**swater

# Two piece 316 Stainless Steel Ball Valve

## Features

- 316 stainless steel body, cap and ball
- Full bore
- Threaded BSP
- Quality investment cast body and cap
- Internal entry blow-out proof stem
- Lever handle with locking device

## Type V2-316-PP series

- Size: 1/4" to 4"
- Pressure (@20°C): 1000PSI WOG
- Pressure Test: API 598



FIG. 1

TABLE 1

Item	Parts	Qty	Material
1	Body	1	ASTM-CF8M-A351
2	Cap	1	ASTM-CF8M-A351
3	Ball	1	ASTM-CF8M-A351
4	Ball seat	2	15% R-PTFE
5	Joint Gasket	1	PTFE
6	Stem	1	AISI 316
7	Thrust washer	1	15% R-PTFE
8	Stem packing	2	15% R-PTFE
9	Gland nut	1	AISI 304
10	Handle	1	AISI 304
11	Spring washer	1	AISI 304
12	Stem nut	1	AISI 304
13	Plastic cover	1	PLASTIC
14	Lock device	1	AISI 304

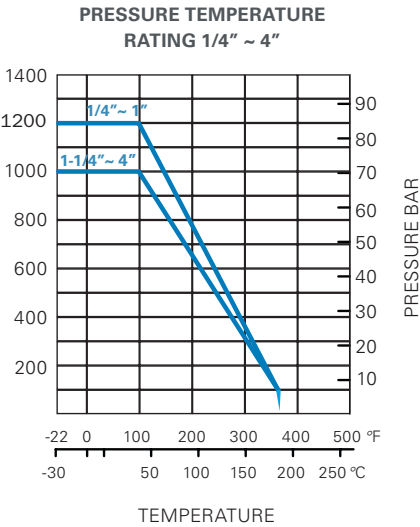


TABLE 2

Nominal Size	d	L	H	W	Cv	Torque N.M	KGS
1/4"	11.6	48	48	100	6	4.1	0.18
3/8"	11.6	48	48	100	7	4.1	0.19
1/2"	15	58	52	100	10	4.9	0.26
3/4"	20	65.7	61	127	25	7.3	0.4
1"	25	77	65	127	35	11.4	0.59
1-1/4"	32	90	79	154	46	17.9	1.0
1-1/2"	38	98	83	154	80	21.1	1.32
2"	50	121	97	192	110	26	2.46
2-1/2"	65	145	135	244	310	48.6	4.83
3"	80	166	144	244	360	75.5	7.45
4"	100	240	159	275	820	107.8	17.1

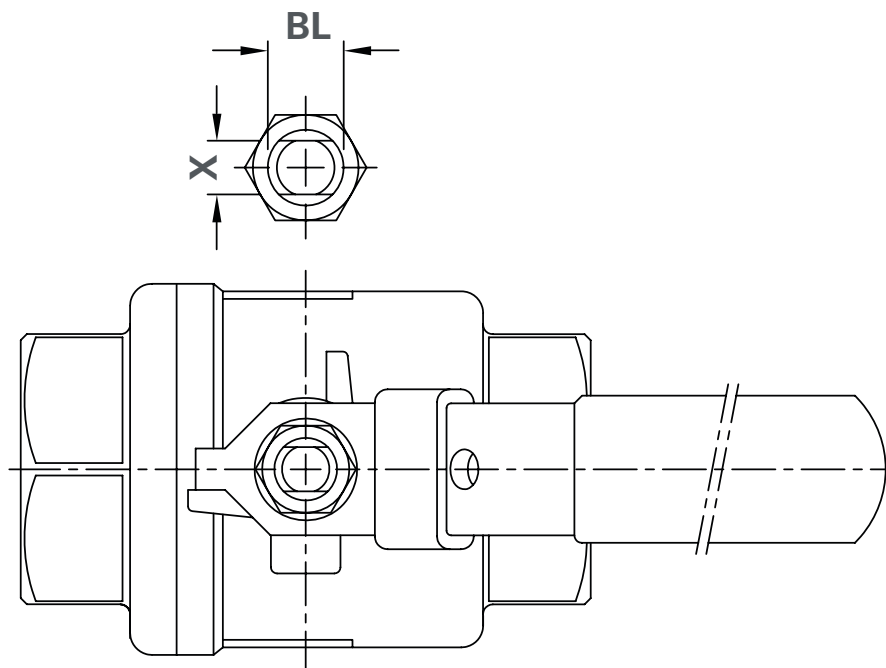


FIG. 2

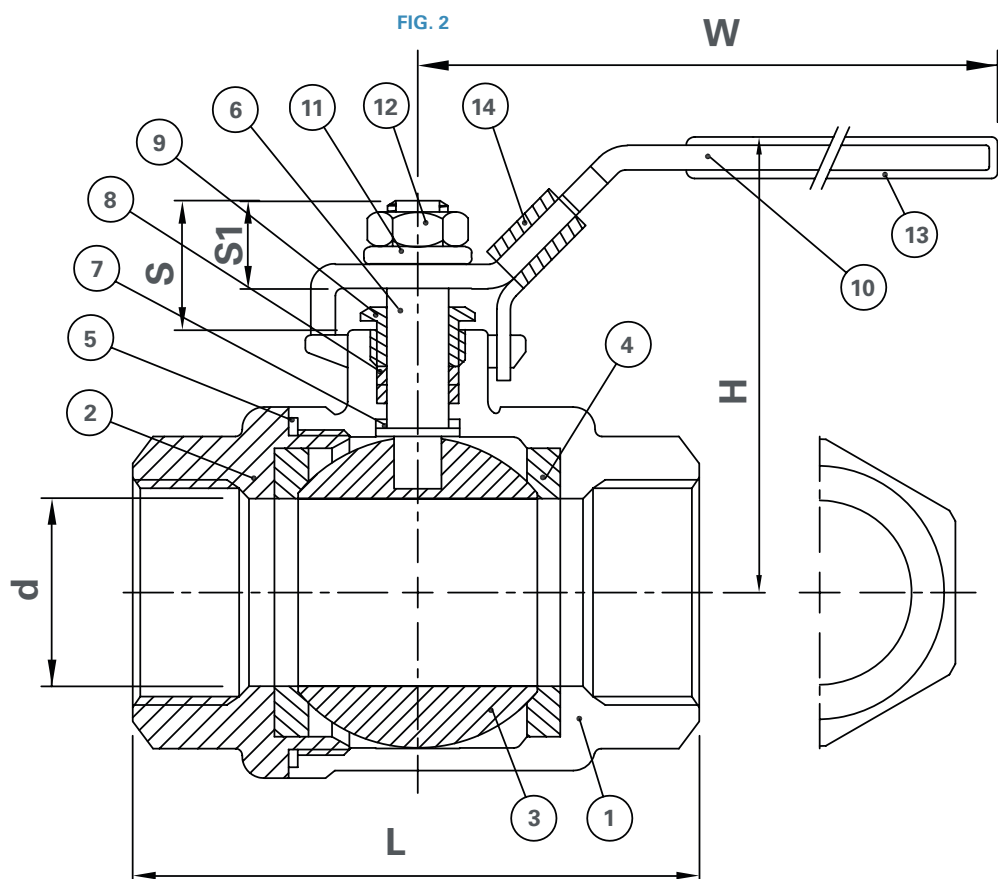


FIG. 3

**Branches Nationwide** *Support Office & Technical Services 0800 93 7473*

**Disclaimer:** While every effort has been made to ensure that the information in this document is correct and accurate, users of Hynds product or information within this document must make their own assessment of suitability for their particular application. Product dimensions are nominal only, and should be verified if critical to a particular installation. No warranty is either expressed, implied, or statutory made by Hynds unless expressly stated in any sale and purchase agreement entered into between Hynds and the user.